



The Nonprofit Partnership

ANNUAL REPORT 2016

OUR MISSION

Our mission is to enhance the management and governance of regional nonprofit organizations through capacity-building programs and services.





MESSAGE FROM THE EXECUTIVE DIRECTOR:

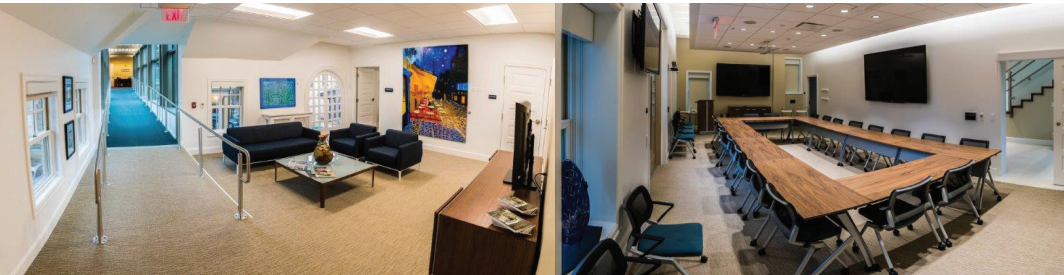
Transform is the word for 2016. Transform is a weighty word and one that I wouldn't use to describe just any situation, but certainly one appropriate for what The Nonprofit Partnership went through in 2016. During that year, we said goodbye to longtime Executive Director, Bob Wooler, and I was welcomed into the NPP family. We also welcomed Ellen Kehl and Erin Yates as two additions to our staff. If that wasn't enough, we participated in the construction of The Susan Hirt Hagen Center for Transformational Philanthropy and moved into the facility, located on the Erie Community

Foundation campus, in December. 2016 was an exciting year, but even more exciting are the opportunities now available to us and our members because of this transformation. 2016 will be looked upon as the year that changed everything and prepared this organization, and its members, for a brilliant future.



“Each of the (many) trainings that I have attended through The Nonprofit Partnership over the past two years has provided a valuable resource or professional development opportunity for staff and Board Members to the overall benefit of our organization [the Foundation for Sustainable Forests]. NPP trainings are focused, relevant and on-point for the needs of a small non-profit organization such as ours.”

– Annie Socci, PhD, Executive Director with the Foundation for Sustainable Forests.





A NEW HOME:

In December 2015, Thomas B. Hagen and the Hagen family made a gift to the Erie Community Foundation in memory of Susan Hirt Hagen. This gift included the renovation of the ECF Carriage House into the Susan Hirt Hagen Center for Transformational Philanthropy. Among other uses, the Hirt Hagen Center was created in part to become the new home of The Nonprofit Partnership. Construction began in April 2016, was completed in November, and the Partnership moved its offices in December.

"This facility will dramatically transform the work of the Partnership," stated Adam C. Bratton, NPP Executive Director. "Re-establishing our historic connections to the Community Foundation while at the same time moving into a facility that provides meeting, training and gathering spaces helps us connect to our membership in ways that were never possible. I know I speak for the Board and staff when I say that this facility will help us significantly and positively impact the nonprofit sector in the Erie region for years to come."



“For me, The Nonprofit Partnership is the first resource I go to for industry best practices. Their programming is timely and relevant, and the staff is superb. Our organization’s membership pays for itself many times over throughout the year.”

– **Nicole Reitzell, Development Director with the Erie Zoo and Vice President of the Board of Directors with The Nonprofit Partnership**





“Our membership with The Nonprofit Partnership has proved to be a valuable resource for the Sight Center. Through access to expertise on nonprofit issues and resources that include participation in regular workshops, we’ve gained the support and skills needed to enhance our organization. ”

– Shannon Wohlford, Marketing & Communications Coordinator,
The Sight Center

A NEW WAY FOR OUR MEMBERSHIP:

Our new home at the Hirt Hagen Center provides the Partnership with the opportunity to enhance its educational offerings. These offerings now include weekly educational workshops, special presentations, and hands-on labs. These programs are presented in varying formats, all with the goal of building members’ skills and capacities to run effective, high-quality organizations. Any staff or Board member of a NPP member organization is welcome to attend these workshops—for free! Additionally, the Partnership regularly adds training opportunities for staff and Board members of member agencies. These trainings are intensive opportunities to learn from experts in the field and network with peers.

Let us not forget the Annual Nonprofit Day Conference in October, or the fact that the Partnership also provides individualized consultations to member organizations. A new feature is our eNewsletter, the “Nonprofit Insider.” The Insider includes information pertaining to our upcoming events, partner events, nonprofit job postings, funding information, community resources, member updates, and much more. You can sign up for the Insider, register for workshops or trainings, and delve into our electronic library of resources by visiting our website at www.yournpp.org. The transformed Nonprofit Partnership offers its members a variety of solutions to help build capacity and advance missions.

For a comprehensive listing of The Nonprofit Partnership’s member agencies, please visit our online member directory at www.yournpp.org.



REVENUE

The Erie Community Foundation	\$244,772
Corporate, Individuals, and Events	\$12,719
Membership Dues	\$94,110
Project Grants and Earned Income	\$39,577
Contributed Services	\$12,600
TOTAL	\$403,778

EXPENSES

Grants to Member Organizations	\$25,020
Personnel	\$234,313
Contract Services	\$35,913
Facilities and Equipment	\$9,125
Operations	\$14,902
Travel and Meetings	\$46,283
Contributed Services	\$12,600
Other Expenses	\$6,389
TOTAL	\$384,545
Surplus/(Deficit)	\$19,233



“The Nonprofit Partnership is an excellent resource for any nonprofit organization in the Erie community. They provide a plethora of in-depth workshops and training classes that give us the tools we need for our organization to thrive in the forever-evolving nonprofit landscape. Our membership also gives us access to a variety of networking opportunities, which allows us to converse with other nonprofits and discover what works for them. The resources we receive are invaluable, and I would highly recommend all local nonprofits to become members of the NPP.”

— Jacob Bartko, Executive Director, CATV

BOARD OF DIRECTORS

Board President | Vickie Lampe

Client & Community Relations Director,
PNC Financial Group

Board Vice President | Nicole Reitzell

Director of Development, Erie Zoo

Board Treasurer | Jim Steber

Retired

Board Secretary | Tom Tupitza

President, Knox McLaughlin Gornall
& Sennett

Michael Batchelor

President, The Erie Community
Foundation

Del Birch

Vice President of Community Building,
United Way of Erie County

Diane Edwards

Executive Director,
Inter-Church Ministries of Erie County

George Espy

Vice President for Community Impact,
The Erie Community Foundation

Maryann Yochim Flaherty

Trustee, The Erie Community Foundation

Jamie Martin-Stewart

Customer Service Supervisor,
Erie Insurance Group

Ken Nelson

Publisher, Erie Times-News

Karinna Vernaza

Ph.D., Professor, Gannon University

Eileen Zinchiak

Program Coordinator, Mercyhurst
Institute for Public Health

STAFF

Adam C. Bratton

Executive Director

abrattton@yournpp.org
(814) 240-2490 x 4

Ellen Kehl

Member Services Manager

ekehl@yournpp.org
(814) 240-2490 x 5

Erin Yates

Administrative Assistant

eyates@yournpp.org
(814) 240-2490 x 3



"We're here to help!"

*Please contact us at The Nonprofit Partnership
with any question, need or request that you
might have. If we don't know the answer,
we will find it.*



609 Walnut Street, Erie, PA 16502, (814) 240-2490
www.yournpp.org